



Co-funded by the  
Erasmus+ Programme  
of the European Union



HELSINGIN YLIOPISTO  
HELSINGFORS UNIVERSITET  
UNIVERSITY OF HELSINKI

# **TRAIN THE TRAINERS WORKSHOP AND STEM COORDINATOR MEETING OF THE ERASMUS+ KA2 PROJECT**

**# 598367-EPP-1-2018-1-SE-EPPKA2-CBHE-IP**

**“INTEGRATED APPROACH TO STEM TEACHER TRAINING”, STEM**

*22-25 October 2019*

*University of Helsinki*

## **TRAVEL INFORMATION**

### **Location for Meeting**

**University of Helsinki**

**Monday 22<sup>nd</sup>, Thursday 24<sup>th</sup> & Friday 25<sup>th</sup>**

**Exactum-building Pietari Kalmin katu 5**

The location of the event is Kumpula Campus, University of Helsinki. Kumpula campus is located 5 km from Helsinki city center.

Kumpula Campus consists of three main buildings which are Exactum, Physicum and Chemicum. All the buildings are next to each other's. The programme will be mainly held in Exactum where we start the training on the first day.

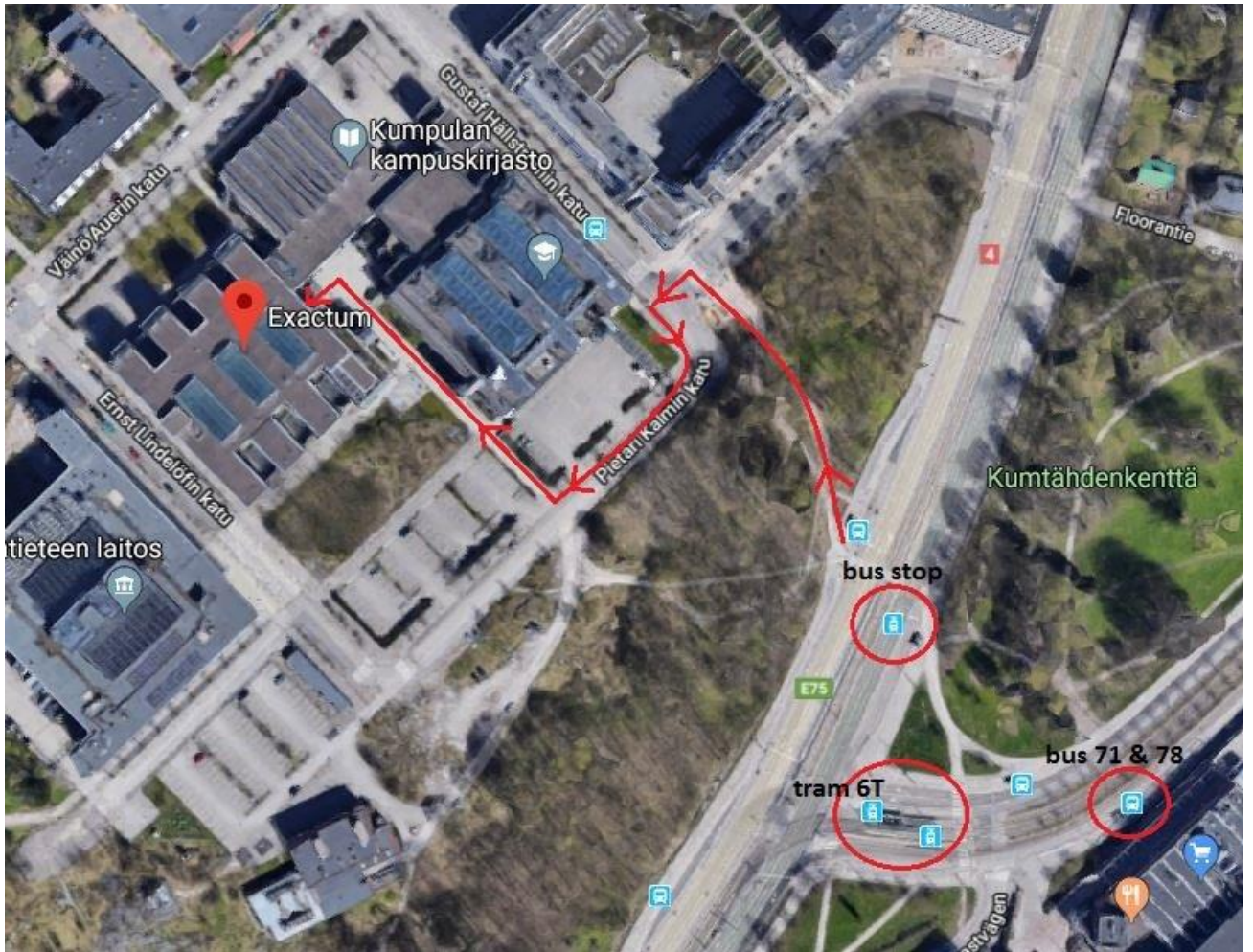
Emergency contact number when on campus: +358 503114536

### **How to get to Kumpula campus, Exactum building?**

From the Helsinki Central Station, you can take a bus or tram to Kumpula Campus. The bus stop is named according to the campus and is in Finnish called Kumpulan kampus.

If you arrive by bus choose bus number 71, 75, 77, 78, 717A, 718, 722, 724, 731, 738K, 739, 785 or 788 and if by tram choose line 6 or 6T.

If you come to Kumpula Campus from somewhere else in Helsinki, you can search for best transportation at <https://reittiopas.hsl.fi> (choose language from upper-right corner). Bus and tram stops are marked in a map below.



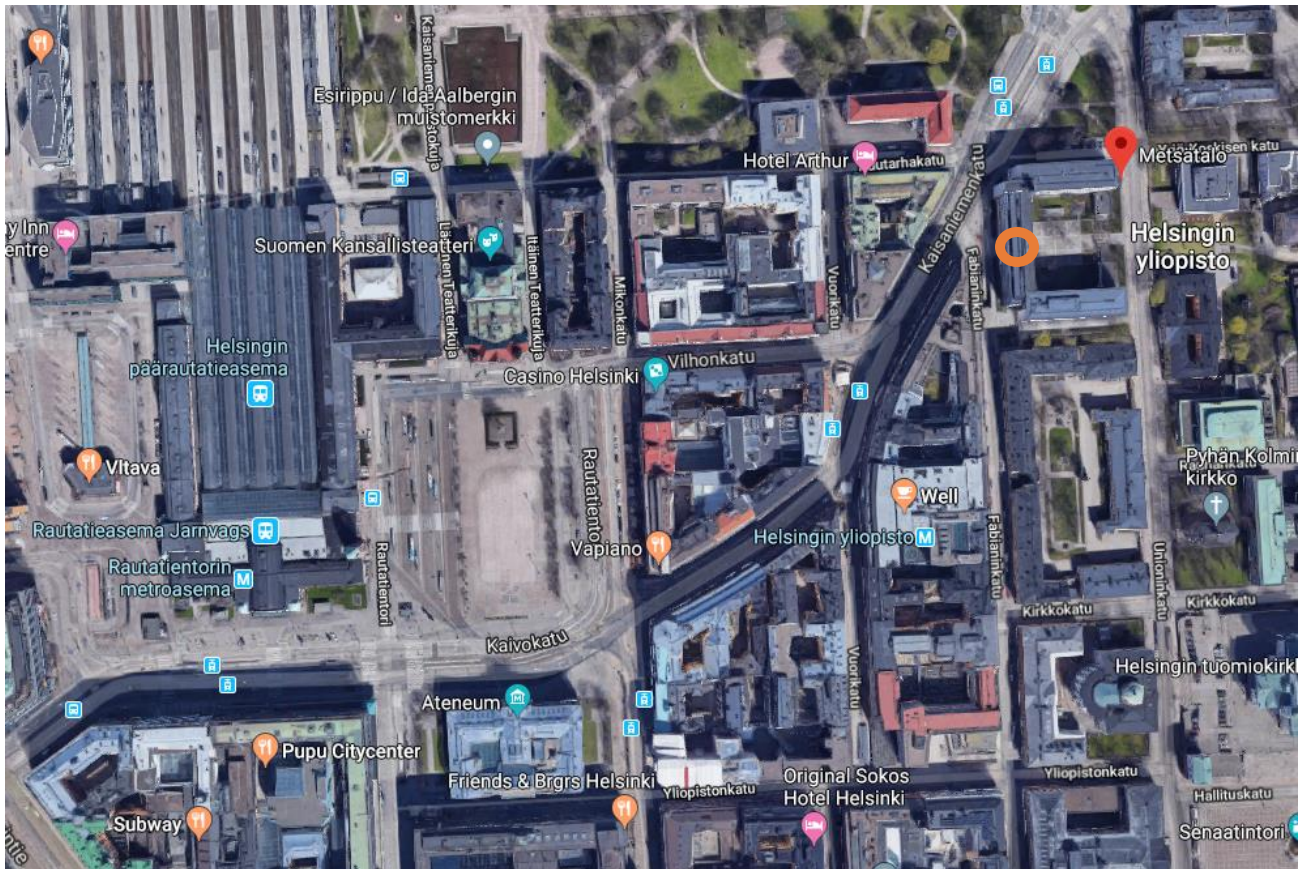
## Location for Meeting

Wednesday 23<sup>rd</sup>

**Metsätalo-building, (Forest House) Unioninkatu 40**

On Wednesday we are in city centre campus, in building called Metsätalo. It is close to main railway station and it is probably in walking distance from your accommodation. But there are two tram stops right next to the building.

Entrance is marked with orange ring on map below. There are entrances in both sides of the building. Map is big to show the main railway-station but the Metsätalo is in upper right corner.



## Buying bus/tram/train tickets

There is a direct train from Helsinki Airport to Helsinki center (Helsinki Central Station). Taxi will be about 40 euros to city centre. Train ticket must be bought in advance from the ticket machine or from the kiosk (R-kiosk WH Smiths). You can also use a mobile ticket application. Download free application here: <https://www.hsl.fi/en/app>. From airport to Helsinki center, ticket zone is ABC. When traveling in Helsinki and to Kumpula campus you need only ticket zone AB. Day tickets online: <https://www.hsl.fi/en/tickets/day-tickets>.

You must buy the ticket in advance before entering the vehicle.

## Helsinki tourist info and attractions

Site MyHelsinki <https://www.myhelsinki.fi/en> is Helsinki City tourist info, you can find tourist attractions and restaurant recommendations etc. from there.